



COMMERCIAL SERIES
**OWNER'S MANUAL
AND USER GUIDE**

NEED HELP? Glad to help you.

www.onblend.io/contact

OnBlend Blenders models Zero and Zero+

The **Zero and Zero+** are “SPECIALTY BLENDERS” for the special needs of the barman and juice bars. Like all appliances, they should be used with particular care to avoid injury to the personnel and damage to the appliance.

It is therefore essential to read these instructions carefully before using the appliance and to follow the safety recommendations.

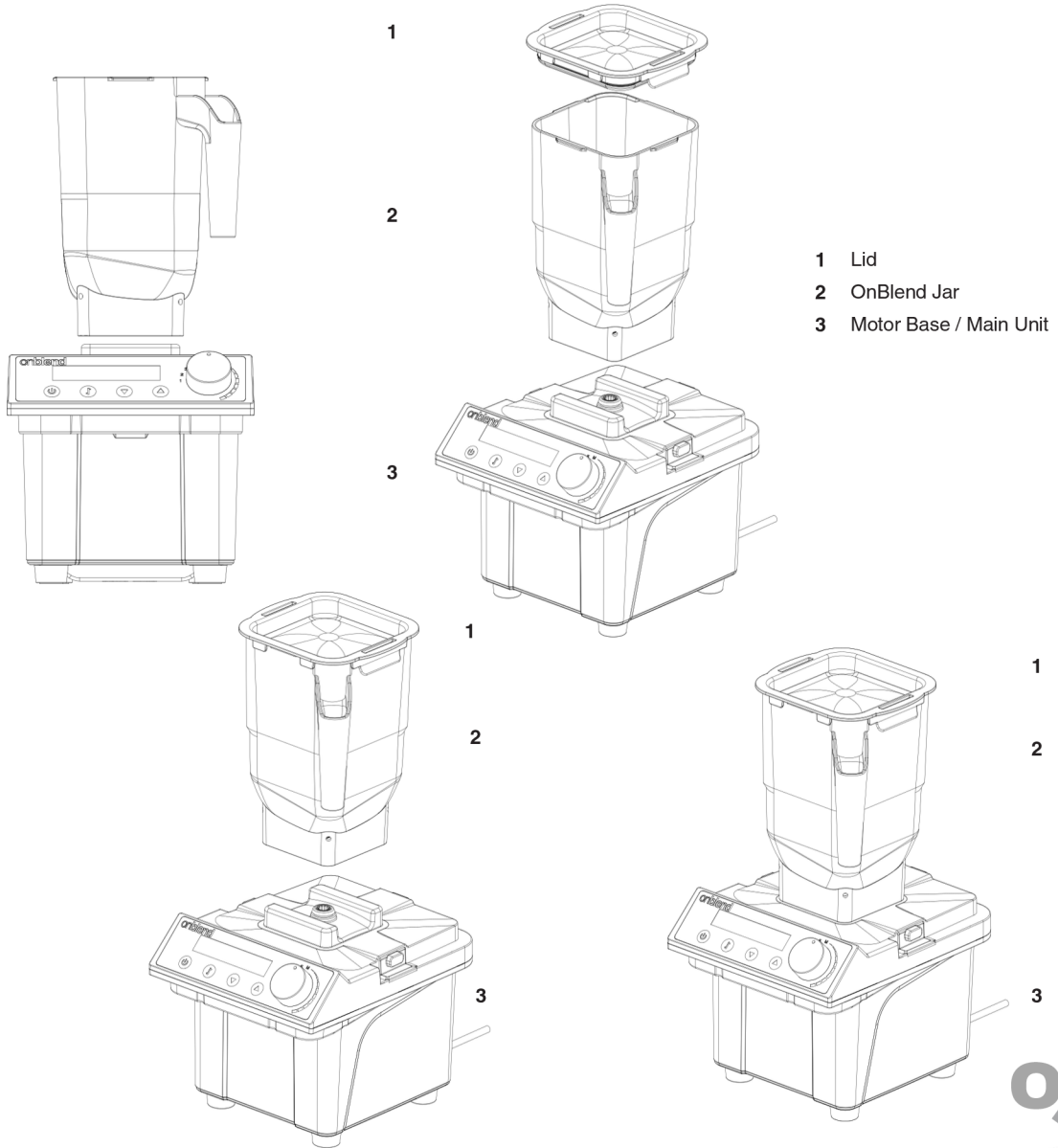


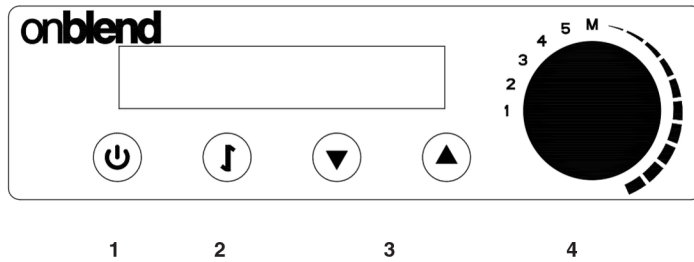
Do not use the appliance if you are not sufficiently familiar with the instructions!

Model Zero and Zero+

onblend

Main Blender Parts (Fig. 1, Fig. 2, Fig 3 Fig 4)



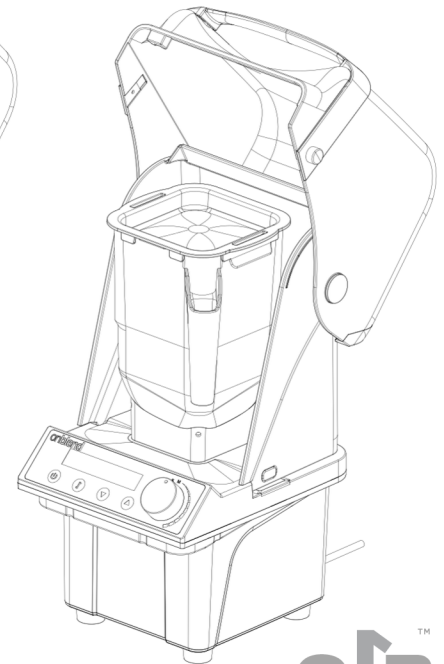
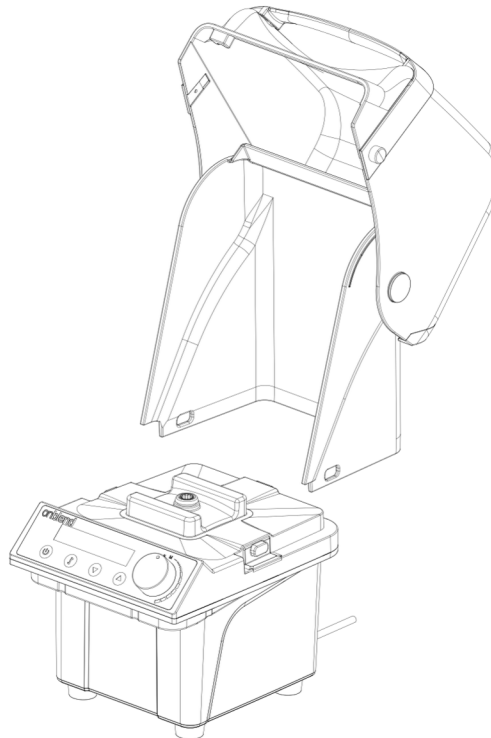
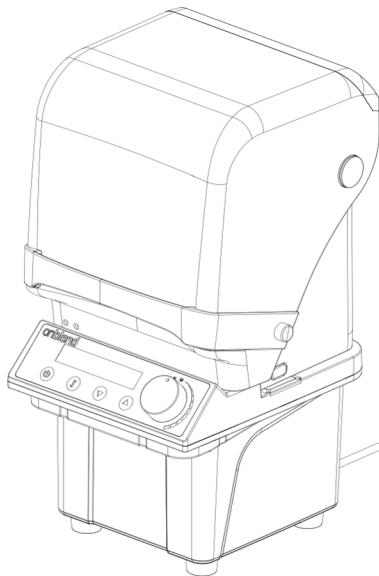


Touch Bottom Display (Fig. 3)

- 1 START/STOP button
- 2 PULSE button
- 3 Timer Up or Down
- 4 Knob to switch from: 1 2, 3, 4, 5
Blending presents, and manual

Model Zero and Zero +(Fig. 4)

Removable sound enclosure with
Handle



IMPORTANT SAFEGUARDS

IMPORTANT INFORMATION

- Read the following instructions carefully before using the appliance.
- This appliance is intended for indoor use only.
- This appliance is not intended to be used in kitchens (except models with an equipotential terminal and mentioned in the Installation paragraph).
- The maximum and minimum room temperature for correct operation of the appliance are respectively 32°C and 10°C.
- Installation and maintenance should be carried out by qualified personnel only who are authorized for such tasks.
- Make sure that the mains voltage is as indicated on the rating label of the appliance and that the electrical system is grounded and equipped with a switch.
- Plug the power cable into a socket protected by a suitably rated circuit breaker (MCB) or fuses.
- Do not use an adaptor plug.
- Install the appliance in a DRY, PROTECTED place, far from water sprays and jets, heat sources, open flames and inflammable substances.
- Place the appliance on a flat, horizontal, stable surface where it cannot tip over. The highest resting surface (container) must be at a height of not less than 1,5 m.
- This appliance is intended for professional use, and should therefore be used by experienced personnel only who are trained for this purpose.
- This appliance is NOT intended for industrial food processing in mass 11. This appliance is not intended for use by persons (including children) with reduced physical, sensory or mental abilities, or without experience and knowledge, unless they have been instructed in the use of the appliance and are under the supervision of a person who is responsible for their safety.
- CHILDREN SHOULD BE SUPERVISED SO AS TO ENSURE THAT THEY DO NOT PLAY WITH THE APPLIANCE.
- Never use this appliance for any operations other than blending foods. Any other use is dangerous. Do not operate without container and lid in place.
- Always work under safe conditions: do not use the appliance with wet hands or feet. Do not use outdoors.
- Keep the original package for possible future use. It is the most suitable protection against damage during transport.
- In case of fire use CO2 extinguishers. Do not use water or powder extinguishers.

IMPORTANT SAFEGUARDS

IMPORTANT INFORMATION

- **Never place the appliance in water!**
- **Do not disassemble the appliance or attempt to perform any repairs inside it**
- **Always unplug the appliance before performing any maintenance or cleaning and when it is not in use.**
- **Never** pull the appliance by the cord to move it. **Never** unplug it by pulling the cord or touching it with wet hands.
- **WARNING: Never place any utensils, metal or other hard materials, in the container. This is dangerous and could cause damage.**
- **Never operate the appliance with the container empty and never run it for more than 15 seconds if there are no liquids in the container.**
- **Do not use the appliance if it is damaged or has loose parts. Immediately contact an authorized Service Center.**
- **WARNING: BLADES ARE SHARP. HANDLE WITH CARE!**



If the power cord is damaged it must be replaced by the manufacturer or by the technical assistance service, or at any rate by a person with similar qualifications, so as to prevent all risks.

CAUTION: DO NOT OPERATE WITHOUT COVER IN PLACE! The appliance complies with updated European regulation CE 2026 and subsequent updates.



The EC declaration of conformity for this appliance is available in the **Products** section of our website www.onblend.io



SECTION 2

onblend

INSTALLATION

- Comply with the Safety recommendations indicated above and hereafter when installing the appliance.
- Make sure that the mains voltage is as indicated on the rating label of the appliance and that the electric system is grounded and equipped with a differential switch.
- Install the appliance in a DRY, PROTECTED place, far from water sprays or splashes, heat sources, open flames and inflammable substances.
- Place the blender on a flat, horizontal, stable surface where it cannot tip over.
- Make sure the switch on the appliance is in the "OFF" position and plug it into a socket protected by a magneto thermal switch or fuses.
- Do not use a multiple outlet plug.
- Stretch the power cable out to full length. Do not let it pass over sharp edges or hot surfaces.
- Do not let oil spill on it. Do not let the power cable hang loose from the counter on which the blender stands.

SECTION 3

PREPARATION TO USE



Before first use: rinse all of the parts that will have contact with food in running water i.e.: container, lid, filler cap, blade.

- Place the ingredients in the container in this order: first liquids and fruit, then ice and other solid foods.
- Stand the container on the base fitting it into its support as shown in figure 5. Fit the lid on the container by pressing on the closing hooks (see Fig. 5).
- **Note:** When new, the lid of blender may require extra force to apply and remove. After a few times it will fit perfectly.
- Close the sound enclosure door. Turn the ON-OFF switch (7, Fig. 2) to position ON (I).



SECTION 3

Manual Operation

- When the appliance is switched on the LEDs on the on/off is on
- Move the knob to the desired speed and press on for start running, or alternatively push time up/down to adjust blending time and after push start/stop
- At any time during running you can push PULSE for a small extra blending power

SECTION 4


Automatic Operation

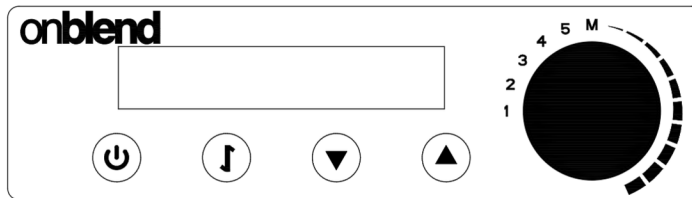
- Zero and Zero+ has 5 predefined operating cycles (see table on next page), suitable for making the most popular recipes for cocktails, frozen drinks and smoothies completely automatically in the most efficient way
- Selecting the desired program (1-5) and then just pushing ON, the blender automatically will run for the time and at the speeds determined by the particular programme selected.
- At the end of the cycle the appliance will BEEP and return to its initial status, ready for next programs
- On Blend App Control* allows you to program automatic cycles directly from your smartphone or tablet. Endless recipes, to be created and shared, to optimize your work and improve the production of mixes or bases for cocktails.




Program	Name	Time in Seconds	Description
1	SM Smooth	10	Program designed for single portion (300ml) smoothie / Frappe
2	M Smooth	14	Program designed for double portion (600ml) smoothie / Frappe
3	M Smooth 2	20	Program designed for double portion (600ml) smoothie / Frappe thicker than M Smooth
4	L Smooth 1	30	Program designed for triple portion (900ml) smoothie / Frappe
5	On Foam	10	Program designed for cold foam creations



Conection to WiFi

- When you swith ON the machine (switcher under the machine), after apearing ONBLEND on the display and Pairing , please push PULSE  go to your cell phone, and look in wifi Networks for ONBLEND BLENDER.



- Afterwards automatically after 10-15 sec will open a window with the Wifi Networks Available on your location where you are able to Connect, please select the most solid with stronger signal, fill the password and now the unit is connected. A logo of  will be showed on the display
- Once is connected please brownse in your Safari/Google Chrome to:

<https://juicer-test.anplus-tech.com/login>

User: super@juicer.com
Password: zaqwsx
- From OnBlend we encourage you to create a Direct Access on your Phone Desktop for faster easy access
- Then on your app go to the Blender Logo, add machine on your top right, and scan the QR code
- In case you would like to connect to a new network (due changing location or new network or password), please turn the knob to M position, then press simultaneously  and  till you hear a BEEP. Then to connect to a new network please switch off the machine with the botton under the machine and start the process from scratch



SECTION 6

Warnings and Suggestions

- The blender is also designed to crush ice and prepare FROZEN DRINKS from ice in cubes. Remember that if you place the ice in the container already crushed this will greatly extend the life of the appliance.
- The blender is designed to ensure perfect preparation of the FROZEN DRINKS recipes contained in the international texts of the IBA associations. If you use the quantities indicated in those recipes you will always obtain the desired consistency.
- Certain preparations may cause cavitation of the blender. This means the ratio of liquid to ice is not correct. If this occurs, switch the blender off, remove the lid, stir the mixture with a spoon and try again.
- If you have to heat or chill a preparation made with the blender, do not place the container directly in the oven or freezer. This could damage it. Empty the container into a suitable vessel.

SECTION 7

Clean and Maintenance

- It is important to keep the appliance clean and in good working order to ensure optimum quality of the products and long life of the appliance. Always rinse the container after use to prevent residues from drying in the container. This could damage the sealing elements and bearings, or cause the blades to seize.
- Do not dry the container in the oven or microwave oven.
- For longer life of the container we recommend not washing it in the dishwasher.

- To clean the motor base, unplug the appliance and clean with a damp cloth or alcohol, or use a generic detergent spray.
- Dry with a dry cloth.
- Never wash the blender with jets of water or immerse the motor base.
- To clean the container: after rinsing the container and lid under the tap, fill the container at 400ml with warm water and a spoonful of dishwashing detergent. Fit the container on the base, cover with the lid and run for 20 seconds. Remove the container and rinse with running water. Repeat the operation in case needed. Remove the container, rinse and dry the container by turning it upside down on the drainboard.
- Wash the lid with warm water and dishwashing detergent.
- For cleaning the sound enclosure wash with warm water and dishwashing detergent. Dry with a soft cloth.

SECTION 8

Trouble Shooting

- In case of any malfunction, defect of the appliance or if you suspect any breakage after a fall, unplug the appliance immediately.
- If you are unable to solve the problem referring to the table below, contact an Authorized Service center.
- Only qualified experts should repair the appliance.
- We are not liable for any damage caused by repairs not made correctly by unauthorized personnel. In these cases the warranty does not apply.

Problem	Description
Blender doesnt start	<ul style="list-style-type: none"> • Make sure it is plugged in. • Make sure the safety circuit breaker is closed. • Make sure the switch on the blender is turned to “ON”. • If the problem occurs after a long period of intensive use the motor may have overheated. Wait at least 20 minutes and try again. If you put the blender in a cool place this will reduce the waiting time. • Make sure the blades and motor revolve freely.
The Blades doesnt turn on with the motor on	<ul style="list-style-type: none"> • Check that the base/container coupling clutches are in good condition. • Make sure the container is correctly fitted on the base. • Make sure the blades and clutches are securely tightened.
Noise and Vibration of the jar	<ul style="list-style-type: none"> • Check that the base/container coupling clutches are in good condition.

Disposal

- **Correct disposal of this product (waste electrical and electronic equipment) (Applicable in the European Union and other countries with separate collection systems in conformity with European Directive 2012/19/EU and subsequent updates)**
- **This product has been made from high-quality parts and materials, which can be re-used and recycled.**
- **Therefore, do not throw the product away with normal household waste at the end of its working life. Take it to a collection point for recycling electrical and electronic devices. This is indicated by this symbol on the product and in the operating manual.**
- **Please contact your local government office for information about the exact location of the closer collection point.**

